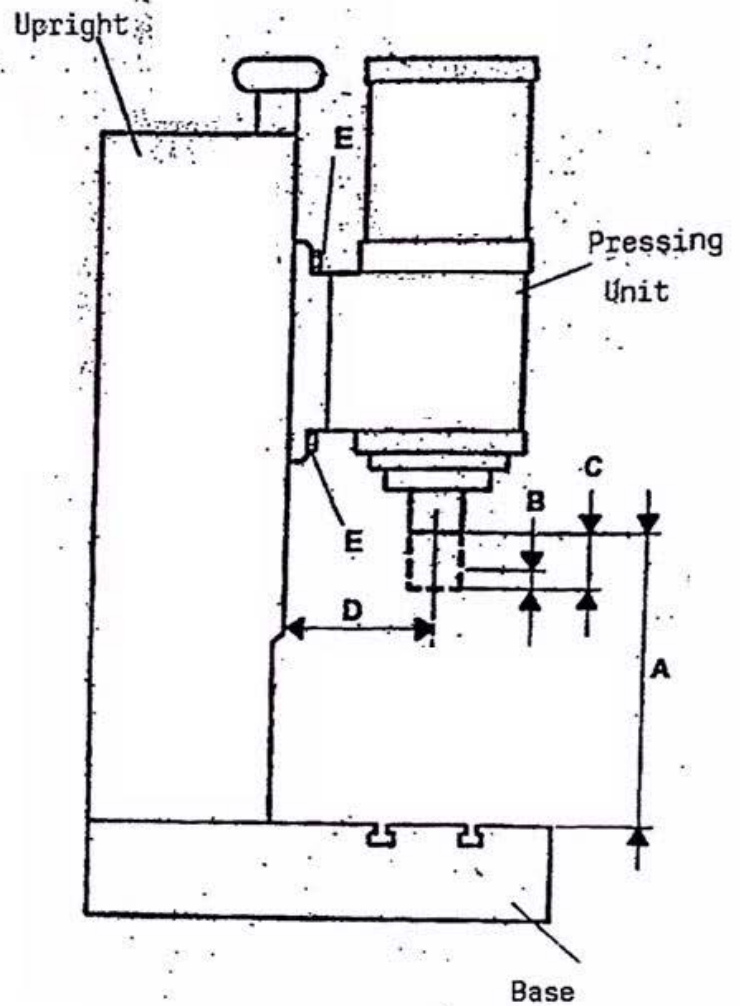
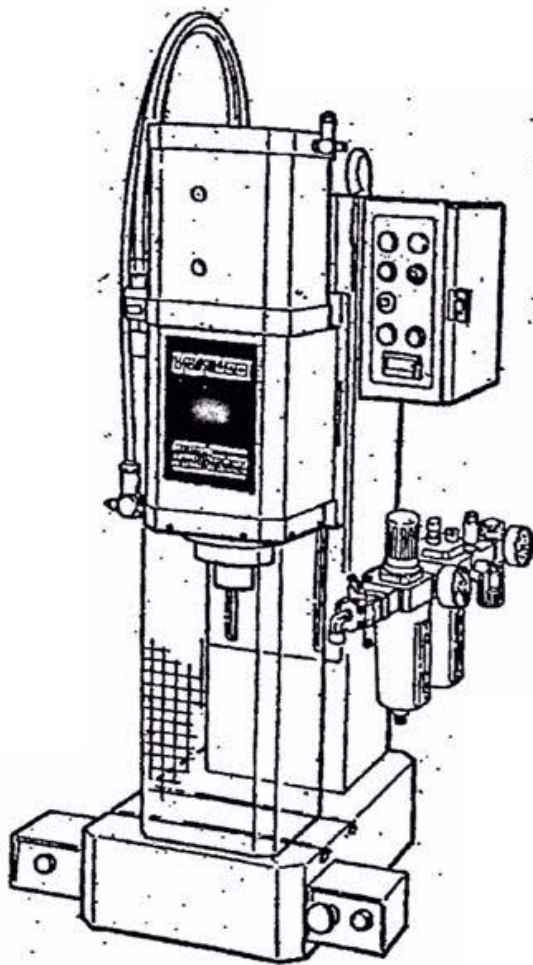
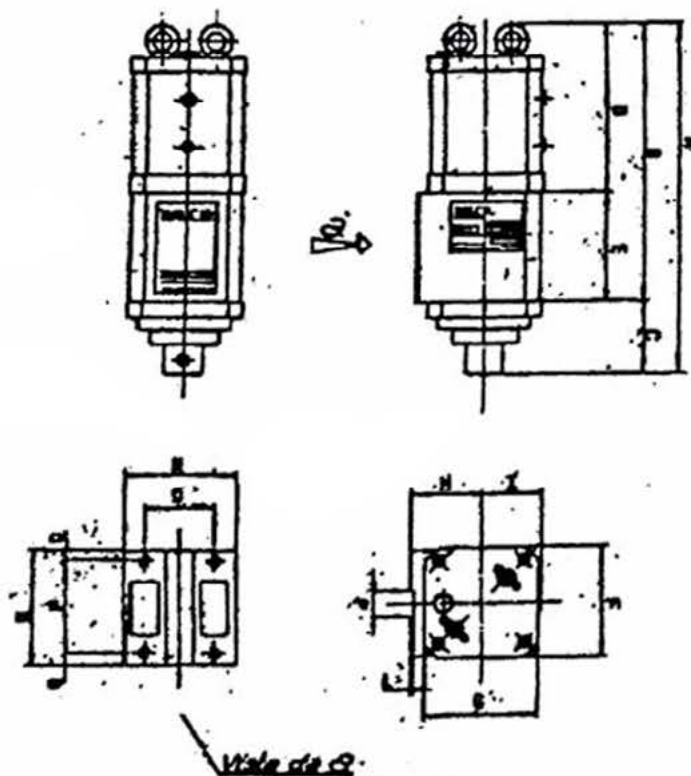


## Hydropneumatic presses with thrust multiplication



Mod.		1PM20.1-10	2PM50.2-10	3PM125.1-10
-Ingombro	min. (mm) max. (mm)	510x425x670 587x425x670	764x495x640 873x495x640	1164x635x780 1335x635x780
-Luce max. (A)	(mm)	190	327	515
-Corsa di lavoro (B)	(mm)	max. 4	max. 6	max. 10
-Corsa totale (C)	(mm)	50	80	130
-Sbraccio (D)	(mm)	80	120	185
-Pressione d'esercizio	(MPa)	max. 0,5	max. 0,5	max. 0,5
-Forza avvicinamento a 0,5 MPa	(daN)	183	446	1147
-Forza totale di lavoro a 0,5 MPa	(daN)	1163	2897	7323
-Forza di ritorno a 0,5 MPa	(daN)	125	294	882
-Peso	(kg)	39	145	444
-Tensione alimentaz.	(V/Hz)	220/50	220/50	220/50
-Coppia di serraggio unità al montante (E)	(Nm)	65	113	281

## Units hydropneumatic presses with thrust multiplication



<b>Technical data</b>		<b>1PM20.1</b>	<b>2PM50.2</b>	<b>3PM125.1</b>
Total stroke (approach + work)	mm	50	80	130
Max. working stroke	mm	4	6	10
Total working force at 0,5 MPa	da N	1163	2897	7323
Approach force at 0,5 MPa	da N	183	446	1147
Return force at 0,5 MPa	da N	125	294	882
Max. working pressure	MPa	0,5	0,5	0,5
Hole for tool shank	mm	Ø16x35	Ø20x45	Ø25x50
Weight	Kg	12,3	33	105

<b>Technical data</b>	A	B	C	D	E	F	G	H	I	J	L	M	N	O	P	Q
	mm	mm	mm	mm	mm	mm	mm	mm	mm	mm	mm	mm	mm	mm	mm	mm
<b>1PM20.1</b>	331	247	84	142	105	98	98	80	52	24,5H8	2	155	96	65	130	12,5
<b>2PM50.2</b>	439	387	106	232	155	148	148	90	77	34,5H8	3	155	145	90	125	15
<b>3PM125.1</b>	675	550	125	290	260	230	230	138	118	49,5H8	4	260	225	145	210	25