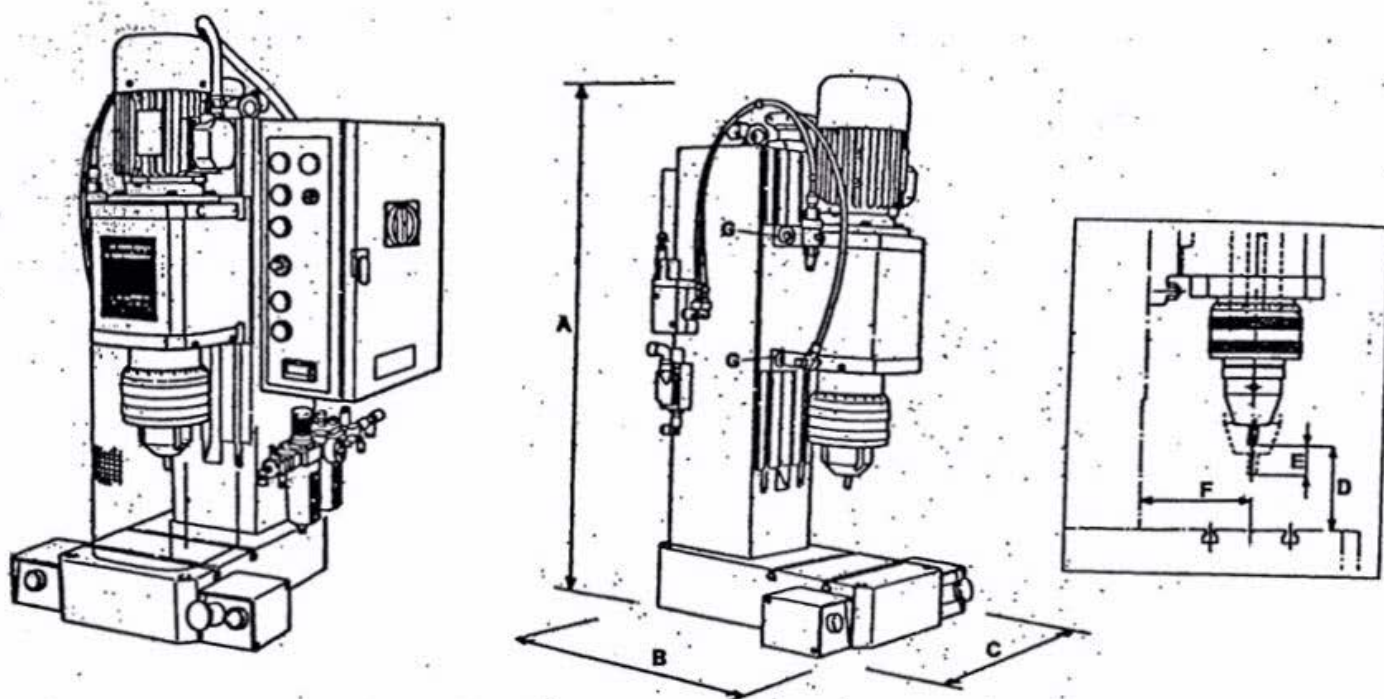


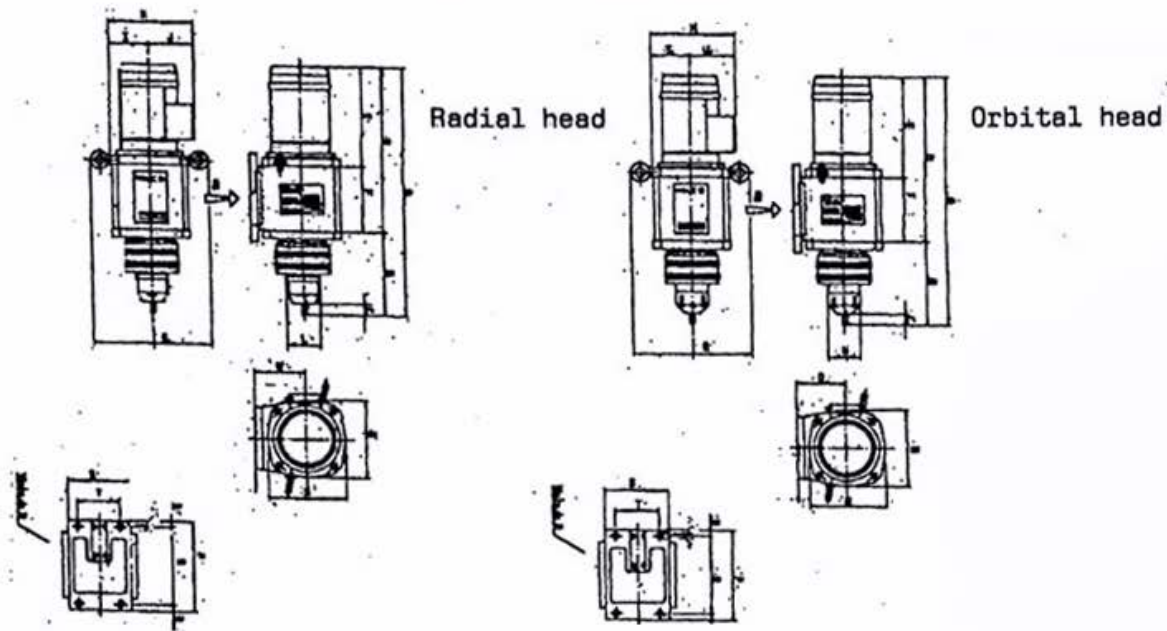
## Electro-pneumatic riveting machines with orbital head and with radial head



		1RR4.1-A-10	2RR8.1-A-10	3RR12.1-10	3RR20.2-10
<i>Ingombro max. (AxBxC)</i>	min (mm)	533x560x425	694x650x490	1166x765x630	1287x765x630
	max (mm)	655x560x425	920x650x490	1310x765x630	1551x765x630
<i>Luce max. (D)</i>	$\alpha 6^\circ$ T.R. (mm)	124	226	354	264
	$\alpha 3^\circ$ T.R. (mm)	94	193	319	224
	$\alpha 6^\circ$ T.O. (mm)	103	226	359	284
	$\alpha 3^\circ$ T.O. (mm)	73	193	324	244
<i>Corse di lavoro (E)</i>	(mm)	5+20	10+40	10+50	10+50
<i>Max. diametro gambo rivetto (ferro)</i>	$\alpha 6^\circ$ (mm)	4	8	12	20
	$\alpha 3^\circ$ (mm)	3	5	8	15
<i>Spirito per 0,10 MPa</i>	(daN)	71	184	280	-
<i>Sbraccio (F)</i>	(mm)	80	120	185	185
<i>Potenza motore</i>	(kW)	0,185	0,370	0,750	1,870
<i>Velocità di rotazione</i>	(g/min)	1400	1400	1400	1000
<i>Pressione d'esercizio</i>	(MPa)	0,20+0,50	0,20+0,50	0,20+0,50	0,20+0,60
<i>Forza di lavoro tot. 0,50 MPa</i>	(daN)	-	-	-	3920
<i>Coppia di serraggio unità al montante (G)</i>	(Nm)	65	97	281	281

$\alpha$  = inclinazione asse utensile  
 T.R. = testina rotante  
 T.O. = testina oscillante

## Electro-pneumatic riveting units with orbital head and with radial head



Technical data		1 RR 4.1	2 RR 8.1	3 RR 12.1
Radial head 6°	(A)	466	604	811
	(B)	151	207	286
	(C)	20	27	35
Radia head 3°	(A)	496	637	846
	(B)	181	240	321
	(C)	50	60	70
Orbital head 6°	(A)	487	604	806
	(B)	172	207	281
	(C)	27	27	35
Orbital head 3°	(A)	517	637	841
	(B)	202	240	316
	(C)	57	60	70

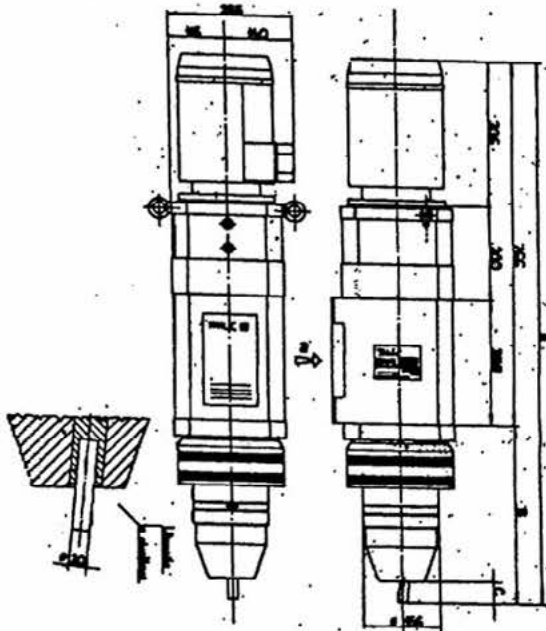
Technical data		1 RR 4.1	2 RR 8.1	3 RR 12.1
Spindle stroke	(mm)	5÷20	10÷40	10÷50
Capacity at 0,1 Mpa	(da N)	71	184	280
Motor power (220/380V-50Hz)	(Kw)	0,185	0,37	0,75
Spindle rotation speed	(g/min)	1400	1400	1400
Air pressure	(MPa)	0,2÷0,5	0,2÷0,5	0,2÷0,5
Weight	(Kg)	15,9	37	98

Technical data	D	E	F	G	H	I	J	L	M	N	O	P	Q	R	S	T
	mm	mm	mm	mm	mm	mm	mm	mm	mm	mm	mm	mm	mm	mm	mm	mm
<b>1RR4.1</b>																
<u>Orbital head</u>	315	210	105	142	160	62	98	∅71	120	120	80	155	130	12,5	96	65
<u>Radial head</u>	315	210	105	142	160	62	98	∅45	120	120	80	155	130	12,5	96	65
<b>2RR8.1</b>																
<u>Orbital head</u>	397	242	155	274	199	92	107	∅78	184	184	120	215	185	15	145	100
<u>Radial head</u>	397	242	155	274	199	92	107	∅78	184	184	120	215	185	15	145	100
<b>3RR12.1</b>																
<u>Orbital head</u>	525	265	260		237	115	122	∅108	320	230	138	260	210	25	225	145
<u>Radial head</u>	525	265	260		237	115	122	∅108	320	230	138	260	210	25	225	145

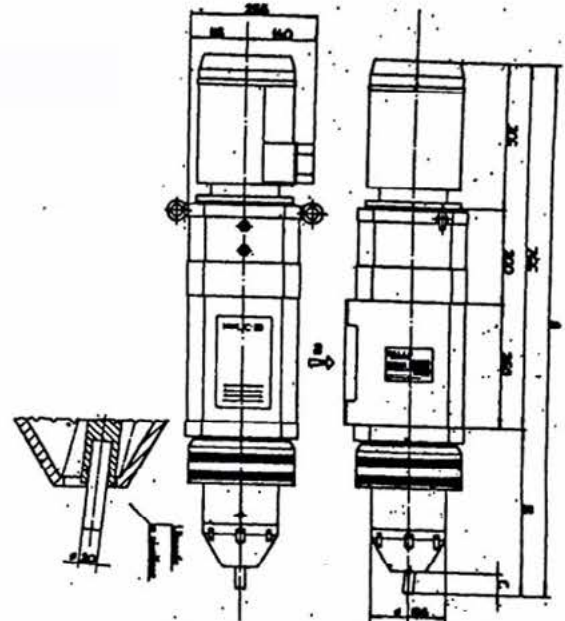


## Electro oil pneumatic riveting units with orbital head and with radial head

3 RR 20.2 Radial head



3 RR 20.2 Orbital head

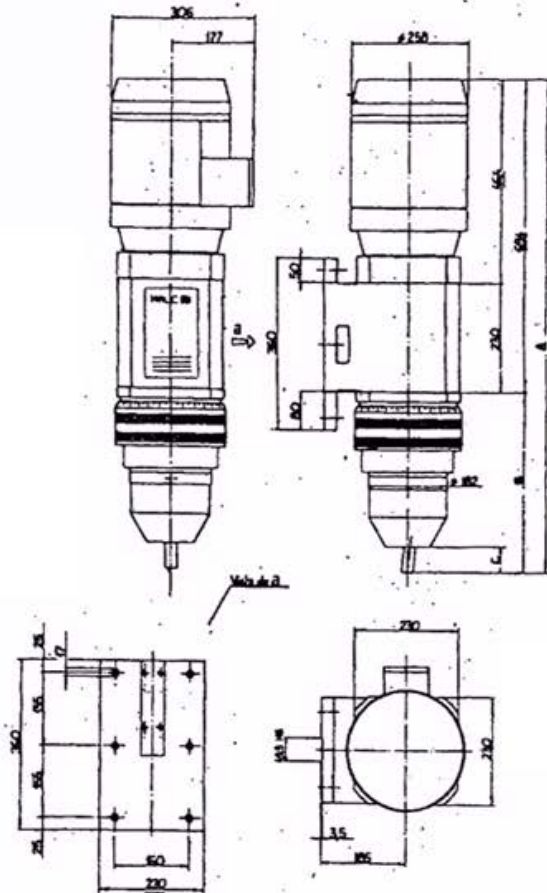


Technical data		3 RR 20.2
Spindle stroke, adjustable		
Total approach + work	(mm)	10÷50
Max. work	(mm)	10
Workforce:		
Total at 0,5 MPa	(da N)	3920
Approach at 0,5 MPa	(da N)	980
Motor power (220/380V-50Hz)	(Kw)	1,8
Spindle rotation speed	(g/min)	1000
Air pressure	(MPa)	0,5
Weight	(Kg)	170

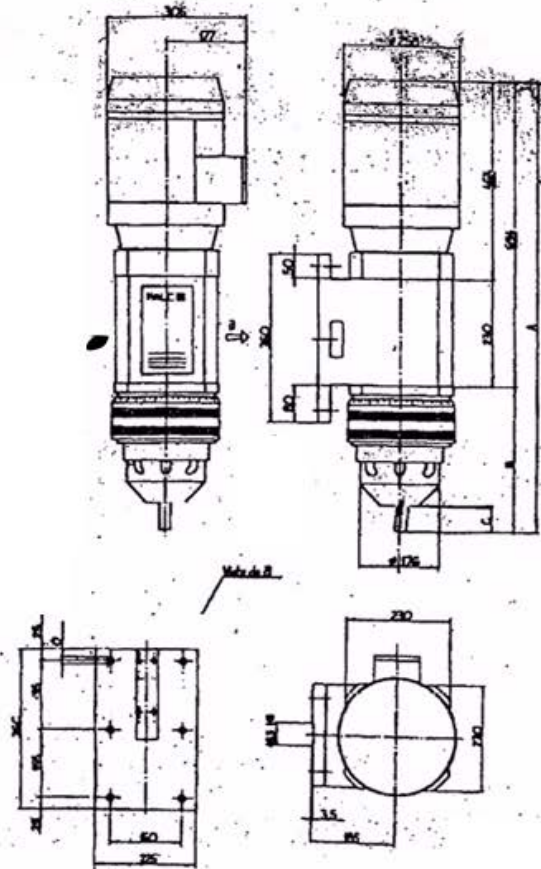
Technical data		3 RR 30.2
Radial head at 6°	(A)	1142
	(B)	376
	(C)	45
Radial head at 3°	(A)	1182
	(B)	416
	(C)	85
Orbital head at 6°	(A)	1122
	(B)	356
	(C)	45
Orbital head at 3°	(A)	1162
	(B)	396
	(C)	85

## Hydraulic riveting units with orbital head and with radial head

3 RR 30.1/3 RR 35.1



3 RR 30



Technical data		3 RR 30	3 RR 30.1	3 RR 35.1
Riveting max. (iron mat.)	mm	30	30	35
Spindle stroke	mm	10÷50	10÷50	10÷50
Max. force	da N	5880	5880	5880
Motor power (380V-50Hz)	Kw	1,87	3	3
Spindle rotation speed	g/min	750	750	750
Hydraulic pressure	MPa	12	12	16
Weight	Kg	190	190	190

Technical data		3 RR 30	3 RR 30.1	3 RR 35
Radial head 6°	(A)	1142	1086	1086
	(B)	376	392	392
	(C)	45	55	55
Radial head 3°	(A)	1182	1131	1131
	(B)	416	437	437
	(C)	85	100	100
Orbital head 6°	(A)	1122		
	(B)	356		
	(C)	45		
Orbital head 3°	(A)	1162		
	(B)	396		
	(C)	85		